



REMOTE USER GUIDE

Version 2- USB Powered Remote

SKU: EBR

Updated January 2026



CONTENTS

	Pg.
1. Remote Interface And Pairing	1-2
<hr/>	
2. Active Display Screen	3
<hr/>	
3. View And Change Program	4
<hr/>	
4. Changing Brake Responses	5

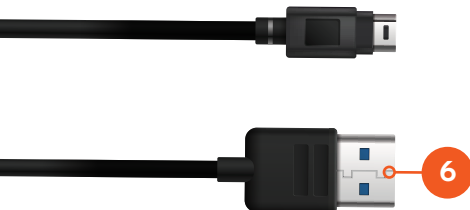
REMOTE INTERFACE AND PAIRING

1

The Elecbrakes remote control provides a seamless in-car interface for the Elecbrakes electric brake controller, allowing easy manual override, adjustment of brake response settings, and customisation of brake programs.



- 1 Display Screen
- 2 Increase '+' Button
- 3 Decrease '-' Button
- 4 'MENU' Button
- 5 'OVERRIDE' Button
- 6 USB Power Cord: USB-A to Mini-B "90cm"

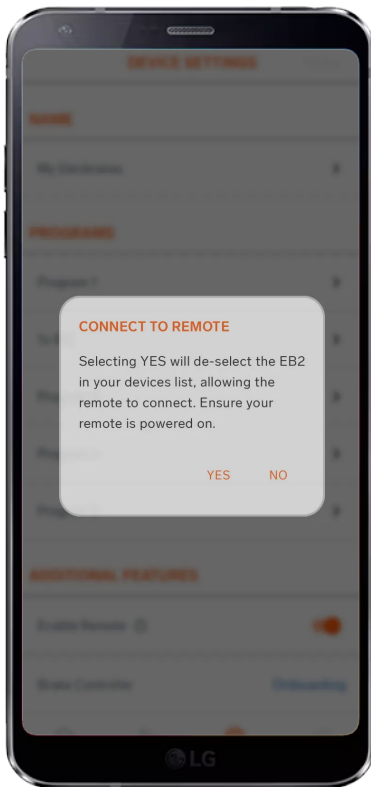


REMOTE INTERFACE AND PAIRING

1

Pairing Tips:

- EBR v2 will automatically pair to earlier ELBC brake controllers.
- Elecbrakes brake controllers only allow one active device pairing at a time, ensure your phone has disconnected to allow EBR pairing.



EB2/VM1-HOW TO ENABLE YOUR REMOTE: FIRST TIME?

- 1 Download the Elecbrakes app.
- 2 Follow the in- app onboarding to install, connect and adjust. **Enabling the remote is the last step.**
- 3 Plug your remote in via the USB cable.

ALREADY AN APP USER?

- 1 Connect to your brake controller device via the app.
- 2 Navigate to the 'Settings' page.
- 3 Tap 'Enable Remote' and select 'Yes'.
- 4 Plug your remote in via the USB cable.

CONNECT TO REMOTE

Selecting YES will de-select the EB2 in your devices list, allowing the remote to connect. Ensure your remote is powered on.

YES NO

- ▶ Watch our video on [how to pair your EB Remote to your EB2 or VM1 brake controller.](#)

ACTIVE DISPLAY SCREEN

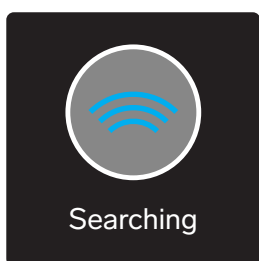
2

The display screen allows the user to identify the active state of the remote.



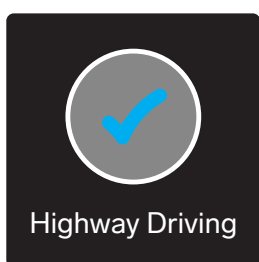
1

Connect the EBR to your vehicles USB port with the provided USB cable. When powered up the screen displays the Elecbrakes logo.



2

Once start up is complete the remote will automatically search for a device. The screen will display as searching.
NOTE: for use with EB2 and VM1, ensure "Enable Remote" has been toggled Via the App - Settings to allow pairing.



3

When connected to an Elecbrakes brake controller the screen will display a tick and the active program will be displayed.

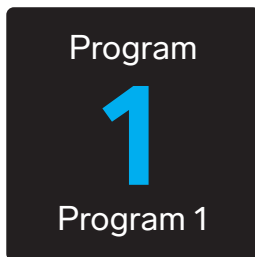


4

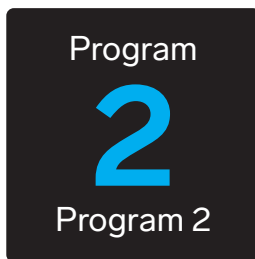
When braking the circle will turn red indicating a brake event.
When SwayControl is active the circle will turn red.

VIEWING AND CHANGING PROGRAMS

3



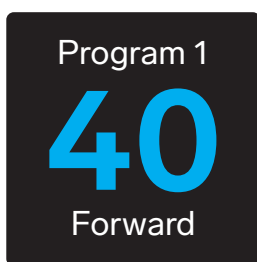
- 1 Press the **'MENU'** button one time to display the currently active program.



- 2 Use **Increase '+'** or **Decrease '-'** buttons to scroll through programs.

CHANGING BRAKE RESPONSES

4



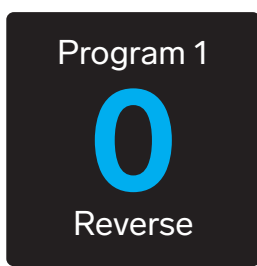
FORWARD RESPONSE

Cycle the menu button until Forward response is displayed.
Use the **Increase '+'** and **Decrease '-'** buttons to tune your brake response.



MINIMUM RESPONSE

Cycle the menu button until Minimum response is displayed.
Use **Increase '+'** and **Decrease '-'** buttons to change brake response.



REVERSE RESPONSE

Cycle the menu button until Reverse response is displayed.
Use **Increase '+'** and **Decrease '-'** buttons to change brake response.



MANUAL OVERRIDE

Manual Override enables you to exclusively activate the trailer's brake system. Press and hold to engage the override, simply lift off the button to release the override. The Remote has a pressure sensitive 'OVERRIDE' button, the harder the button is pressed the stronger the brake response. The display will return to the connection screen.



NEED HELP?

Call our customer service team on
1300 516 248

or check out our FAQ page online
elecbrakes.com/FAQ

